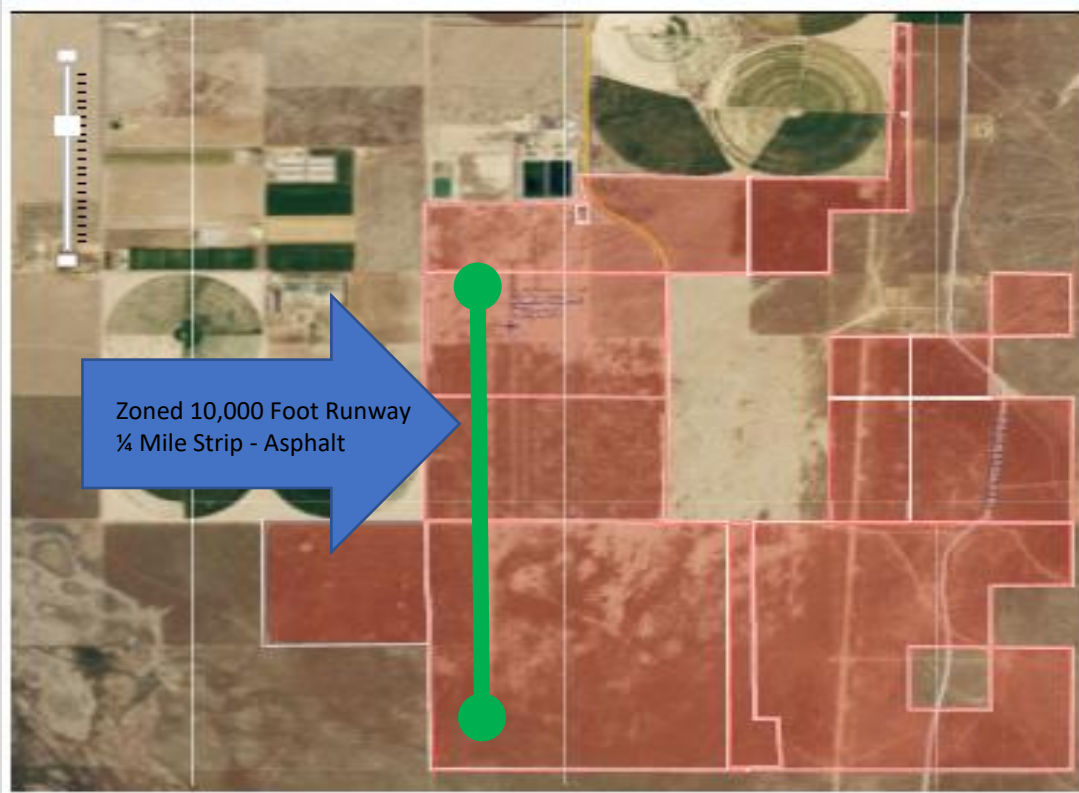


# INDUSTRIAL LAND – EAGLE MOUNTAIN, UTAH



## CITY FACTS

- Development incentives may be available from the city
- Fast growth track – 100's of new homes built annually
- City Population 33,000+ and growing at a rate of 10%
- Over 4,000 acres available



### CONTACT INFORMATION

Phone: 801-403-9179  
1754 Cedar Trails Way, Eagle Mountain Utah 84005  
founders@eaglemountainutah.com  
www.Eaglemountainutah.com

## City Center in Eagle Mountain

Prime commercial land on major thoroughfares is still available in one of Utah's fastest growing areas!

- Prime commercial land on arterial roads in one of Utah's fastest growing areas
- All utility services available in adjacent arterial roads
- All parcels can be subdivided to suit your specific needs
- Property is currently vacant
- Gentle, nearly flat topography
- Large potential customer base
- No existing business competition
- Huge appreciation potential

“Sustainable, environmentally sound development is an elemental part of the plan for the future”



Eagle Mountain sits at the western base of the Lake Mountain Range in Utah's ruggedly beautiful Cedar Valley. The town has a total area of over 43 square miles (Utah's third largest city by area) and is located 30 miles south of Salt Lake City.